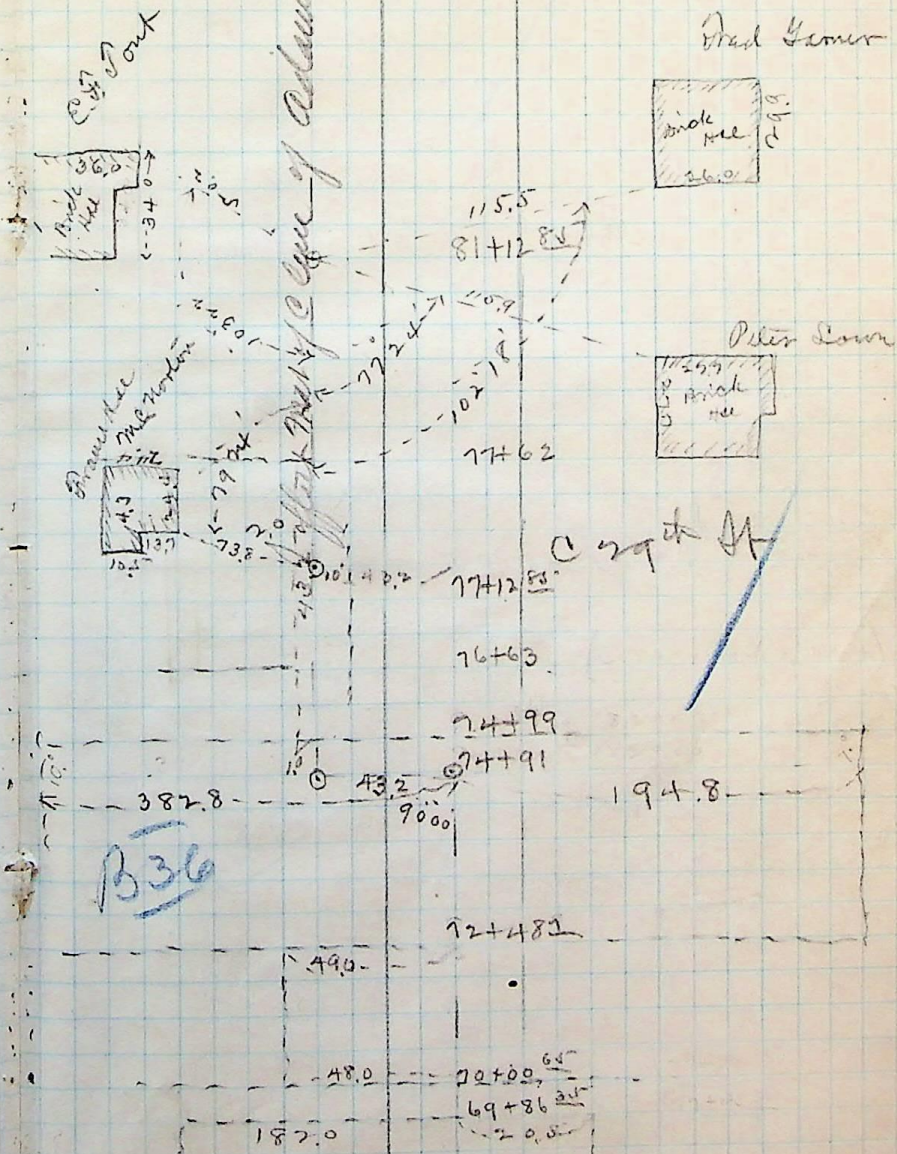


A. F. PARKER

see page 13



A. F. PARKER

B36

See note of offset on Page 7

43.2 for offset

82+00 @ 90° 00' I + mark set Hub distant
distant 43.2 for offset from Plog

77+12 @ 90° 00' I + mark set Hub

77+12 Exactly

Hub C at 30' + mark have
checked distance to